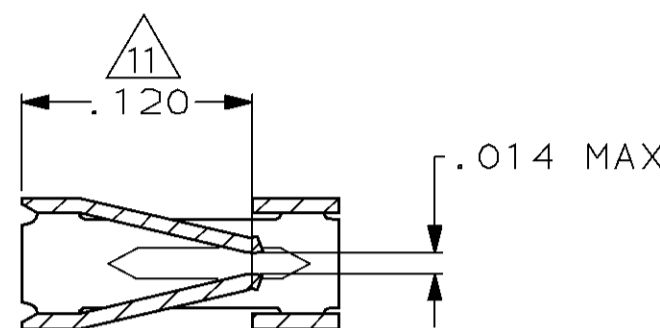
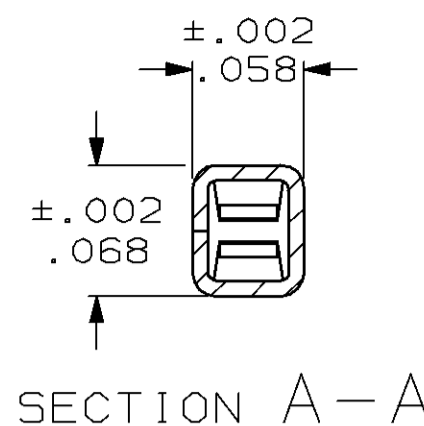
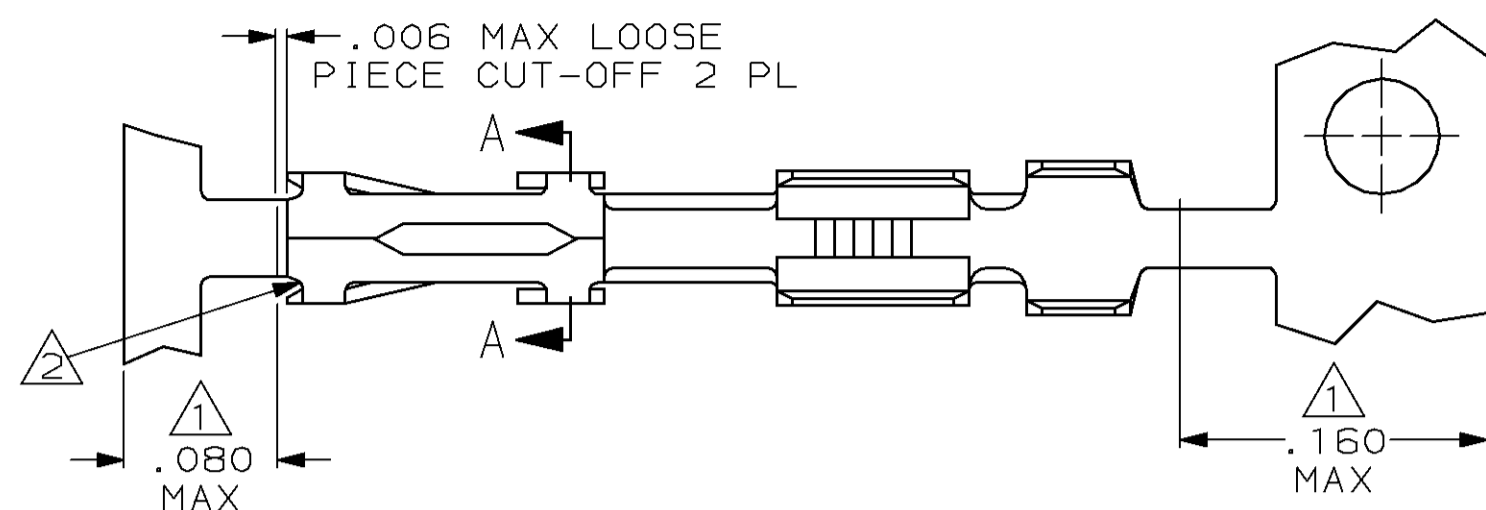
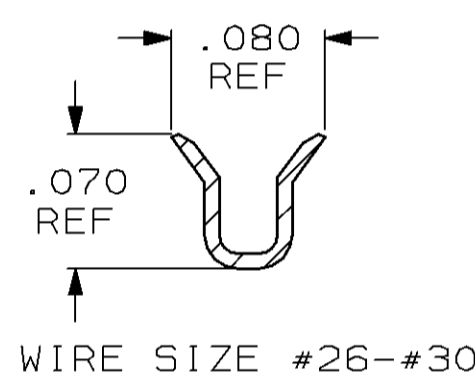


THIS DRAWING IS UNPUBLISHED. RELEASED FOR PUBLICATION, 19  
 © COPYRIGHT 19 BY AMP INCORPORATED, HARRISBURG, PA. ALL INTERNATIONAL RIGHTS RESERVED. AMP PRODUCTS MAY BE COVERED BY U.S. AND FOREIGN PATENTS AND/OR PATENTS PENDING.

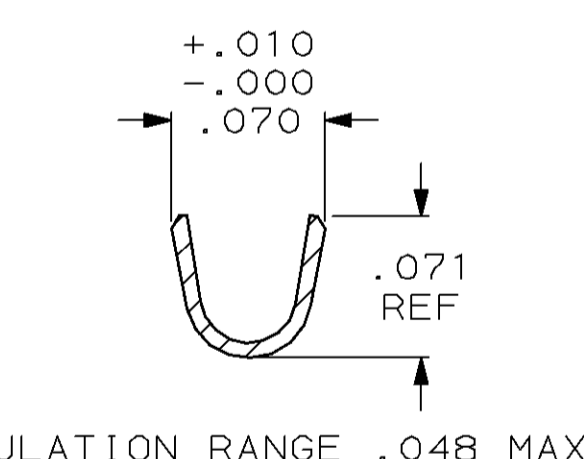
| MOD | LOC | DIST | P | F | ZONE | LTR | DESCRIPTION                 | DATE        | APPROVED |
|-----|-----|------|---|---|------|-----|-----------------------------|-------------|----------|
| 30  | AD  | 39   |   |   |      |     |                             |             |          |
|     |     |      |   |   |      | V   | REVISED AND REDRAWN ECN 893 | -           |          |
|     |     |      |   |   |      | W   | REVISED ECN 950             | LM 2-7-86   | JLG      |
|     |     |      |   |   |      | W1  | REVISED ECN 1041            | HM 5-1-86   | JLG      |
|     |     |      |   |   |      | W2  | REVISED ECN 1133            | 5-1-86      | -        |
|     |     |      |   |   |      | W3  | OBSOLETE ECN 1821           | LDR 2-22-88 | JLG      |
|     |     |      |   |   |      | Y   | REV ECN AR2029 2120         | DK 9-27-88  | JLG      |
|     |     |      |   |   |      | Z   | REV PER ECN AR2491          | JPG 6-8-89  | -        |
|     |     |      |   |   |      | AA  | REV LOC & DIST AD-4171      | 3-90        | BF       |
|     |     |      |   |   |      | AB  | OBS -4 PER 0010-0976-93     | 1-94        | PS       |
|     |     |      |   |   |      | AC  | REV PER 0010-0646-95        | 8-18-95     | SS       |
|     |     |      |   |   |      | AD  | REV PER 0010-0671-95        | 1-18-96     | SS       |
|     |     |      |   |   |      | AE  | OBS -9 PER 0010-0669-96     | 31DEC96     | JH       |



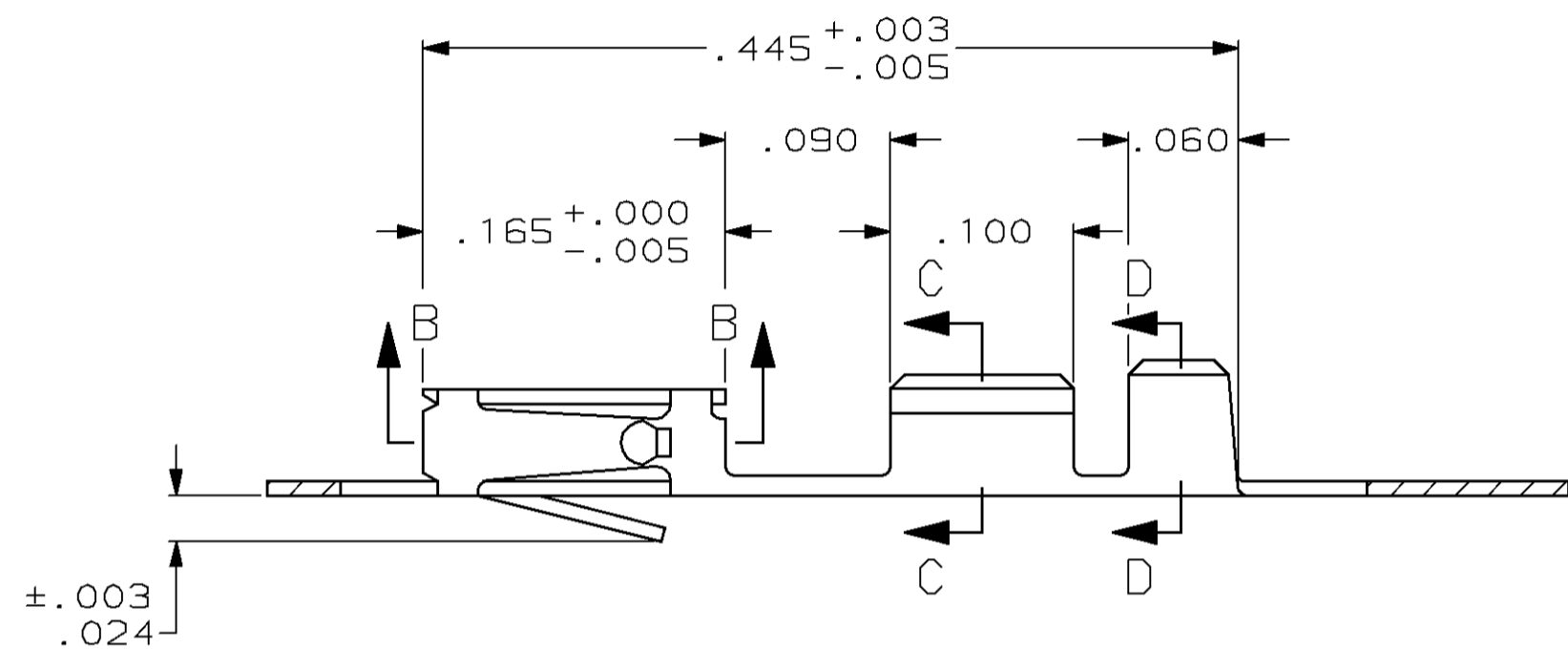
SECTION B-B



SECTION C-C



SECTION D-D



- 1 GOLD PLATING IS NOT REQUIRED IN THIS AREA.
- 2 CUT-OUTS ON THE BOX ARE AT MANUFACTURERS OPTION.
- 3 THIS TERMINAL IS REELED FOR THE STANDARD APPLICATOR.
- 4 THIS TERMINAL IS REELED FOR THE MINI APPLICATOR.
- 5 .000030 GOLD OVER .000050 NICKEL.
- 6 .000030 GOLD ON THE CONTACT AREA, GOLD FLASH ON THE REMAINDER ALL OVER .000050 NICKEL.
- 7 .000100-.000200 BRIGHT TIN-LEAD OVER .000050 NICKEL.
- 8 .000050 GOLD OVER .000050 NICKEL.
- 9 .000015 GOLD ON THE CONTACT AREA, GOLD FLASH ON THE REMAINDER ALL OVER .000050 NICKEL.
- 10 .000100 GOLD ON THE CONTACT AREA, .000030 GOLD ON THE REMAINDER ALL OVER .000050 NICKEL.
- 11 POINT OF MEASUREMENT FOR PLATING THICKNESS (INSIDE BEAMS).
- 12 .000015 GOLD IN CONTACT AREA, .000050 NICKEL ON ENTIRE TERMINAL
- 13 OBSOLETE PART NUMBER.

|   |    |         |    |         |           |    |
|---|----|---------|----|---------|-----------|----|
| 3 | 12 | 13      | -7 | 1-      | 13        | -9 |
| 4 | 12 | 13      | -7 | 1-      | 13        | -8 |
| 4 | 10 | 13      | -6 | 1-      | 13        | -1 |
| 4 | 8  |         |    |         | 1-85967-0 |    |
| 4 | 7  |         |    | 13      | 85967-9   |    |
| 4 | 6  |         |    |         | 85967-8   |    |
| 4 | 5  |         |    |         | 85967-7   |    |
| 4 | 9  |         |    |         | 85967-6   |    |
| 3 | 9  | 86015-5 |    | 13      | 85967-5   |    |
| 3 | 8  | 86015-4 | 13 | 85967-4 |           |    |
| 3 | 7  | 86015-3 |    | 13      | 85967-3   |    |
| 3 | 6  | 86015-2 |    |         | 85967-2   |    |
| 3 | 5  | 86015-1 |    | 13      | 85967-1   |    |

| REMARKS | FINISH | LOOSE PIECE PART NUMBER | PART NUMBER |
|---------|--------|-------------------------|-------------|
|         |        |                         |             |

|   |                                    |
|---|------------------------------------|
| UNLESS OTHERWISE SPECIFIED DIMENSIONS ARE IN INCHES TOLERANCES ON : | DR 12-10-85<br>L.D. RINGLEY        |
| 2 PL DEC ± -  | CHK 12-16-85<br>J.L. GESFORD       |
| 3 PL DEC ± .005   | APPD 12-16-85<br>J.L. GESFORD      |
| ANGLES ± -  | APPD 12-16-85<br>CLIFFORD LINDGREN |
| MATERIAL: BERYLLIUM COPPER, .008 THICK                              | PRODUCT SPEC<br>108-25,020         |
| FINISH: SEE TABLE   | APPLICATION SPEC<br>114-25,003     |
|   | WEIGHT<br>-                        |

|   |                  |                     |
|---|------------------|---------------------|
| <b>AMP</b> AMP INCORPORATED<br>Harrisburg, Pa. 17105              |                  |                     |
| NAME<br><b>CONTACT, MOD IV,<br/>RECEPTACLE, CRIMP<br/>SNAP-IN</b> |                  |                     |
| SIZE<br><b>C</b>  | FSCM NO<br>00779 | DRAWING NO<br>85967 |
| SCALE<br>NTS  | SHEET 1 - 1      |                     |